

GENESIS
FORGING THE FUTURE



CL 2



CL 2 DF



FUEL ANTI-THEFT DEVICE

FUEL ANTI-THEFT DEVICE

KOCKÒN CL2

THE ONLY OPTION WHEN FUEL IS PRECIOUS: 24/7 PROTECTION

In 2008 we launched KOCKÒN internationally.

What is possibly still today the most effective family of devices in the Anti-siphon device category of products, KOCKÒN has established a new standard in preventing the theft of diesel from industrial and commercial vehicles.

KOCKÒN hides an invisible heart, a mathematically defined parameter which is the basis of the tested effectiveness of each device in this now extended product family.

From science we learn that each efficiency we generate often comes at the cost of some other factor, and in the case of KOCKÒN: OUR QUEST has been that of maintaining a firm grasp on the 3 founding factors behind effective fuel protection:

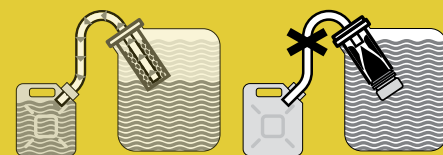
SECURITY
SIMPLICITY AND RELIABILITY
FLOW RATE

OUR SELF IMPOSED RULE has been that of achieving the highest possible score in each of these factors without penalizing the others.

KOCKÒN CL2 IS THE SYNTHESIS OF THE RULES THAT HAVE GONE INTO THIS QUEST.
KOCKÒN CL2 FEATURES ROBUST SIMPLE ASSEMBLIES WHICH MAKE FUEL SIPHONING FROM THE TANK OPENING IMPOSSIBLE.



A PREVIEW OF THE ROBUST CORE OF OUR TIME TESTED KOCKÒN TECHNOLOGY.



AS EASY AS



We have reduced components to a minimum and virtually eliminated fasteners.

We have stabilized flow rate like never before.

We have reduced the functional heart of each product into as few as two simple parts which together resolve the math behind our technology in a robust, replicable and most reliable way.

We call this design approach DUALITY:

We introduced the DUALITY technology in 2020 and it is based on our proven patented KOCKÒN technology.



NOW ALSO AVAILABLE IN **DEFLECT** VERSIONS!

DEFLECT represents the KOCKÒN CL2 version which incorporates a high performance technopolymer fuel cap ring.

The DEFLECT ring represents a valid and sustainable alternative to steel and finds strength in its flexible nature.

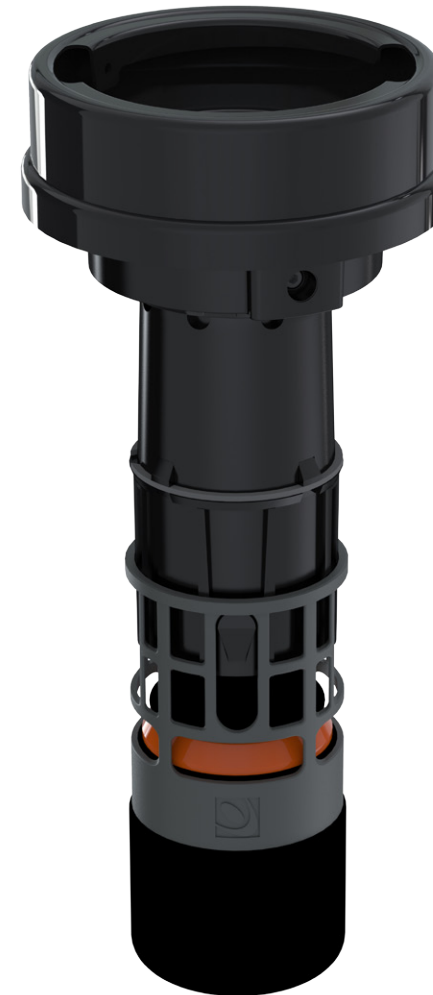
FUEL ANTI-THEFT DEVICE



KOCKÒN CL2 APEX 105

FUEL ANTI-THEFT DEVICE

APEX REPRESENTS THE TOP OF THE FOOD CHAIN IN WHAT CONCERNS ANTI SIPHON DEVICES.



It is the exemplary representation of our DUALITY technology combined with all of the proven features of previous generations KOCKÒN products.

- It comes with a built in float device which impedes siphoning down to the very upper reach of the tank, which is always the hardest to protect.
- Tank mounting in accordance with our patented technology: fast, reliable and without the need for modifications, sealants or glues.
- Accepts 80% of existing original OEM caps of tanks with 2-point bayonet opening Ø105 mm.
- DEFLECT VERSION - high performance technopolymer fuel cap ring
Accepts 100% of existing original OEM caps of the standard 105mm diameter 2 point bayonet type.

RECOMMENDED APPLICATIONS

Fuel anti-theft device for tanks necks having 2-point internal bayonet fitting 105mm.
DAF: all models - **MAN:** all models - **VOLVO:** all models - **MERCEDES:** all models - **RENAULT:** Premium, Magnum, Midlum with metal tank neck - **IVECO:** Stralis, EuroStar, EuroTec, Trakker, EuroTrakker - **DOOSAN:** all models with metal tank neck - **LIEBHERR:** all models with metal tank neck

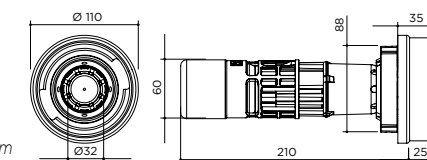


KOCKÒN CL2 APEX 105

58 04 11 001

TECHNICAL SPECIFICATIONS

- Steel/Zinc Magnesium alloy
- 1100g
- 120 l/min
- 110x110x235mm
- 228mm
- Ø 32mm
- 60mm
- 110mm



all dimensions are in mm

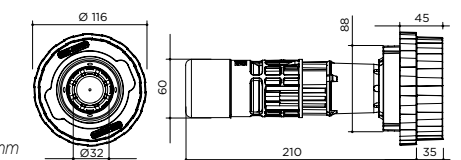


KOCKÒN CL2 APEX 105 DF

58 04 11 003

TECHNICAL SPECIFICATIONS

- HP Technopolymer Magnesium alloy
- 1060g
- 120 l/min
- 116x116x245mm
- 228mm
- Ø 32mm
- 60mm
- 110mm



all dimensions are in mm

UNPARALLELED PROTECTION

No space for siphoning: only lets fuel into the tank, making it impossible to get fuel out by other means.

PROGRESSIVE FLOAT LOCK

The progressive float lock prevents any access to the fuel located in the upper part of the tank without interfering with refueling operations.

DUALITY TECH

Duality describes an assembly made of two parts made from Magnesium Alloy casting. The resulting assembly is ultimately effective in terms of strength, effectiveness and compliance to its precise scope as a finished anti siphon device.

DEFLECT VERSION

The DeFlect high performance technopolymer fuel cap ring represents a valid and sustainable alternative to steel and finds strength in its flexible nature.

KOCKÒN CL2 KALIBER 105

FUEL ANTI-THEFT DEVICE

KALIBER IS THE BEST SOLUTION WHEN THERE IS A LONG TANK NECK AND NO NEED OR SPACE FOR A FLOAT LOCK.



Full DUALITY technology, only without the float device.

- Tank mounting in accordance with our patented technology: fast, reliable and without the need for modifications, sealants or glues.
- Accepts 80% of existing original OEM caps of the standard 105mm diameter 2 point bayonet type.
- DEFLECT VERSION - high performance technopolymer fuel cap ring Accepts 100% of existing original OEM caps of the standard 105mm diameter 2 point bayonet type.

RECOMMENDED APPLICATIONS

Fuel anti-theft device for tanks necks having 2-point internal bayonet fitting 105mm.
DAF: all models - **MAN:** all models - **VOLVO:** all models - **MERCEDES:** all models - **RENAULT:** Premium, Magnum, Midlum with metal tank neck - **IVECO:** Stralis, EuroStar, EuroTec, Trakker, EuroTrakker - **DOOSAN:** all models with metal tank neck - **LIEBHERR:** all models with metal tank neck

KOCKÒN CL2 XL 105

FUEL ANTI-THEFT DEVICE

XL STANDS FOR EXTRA LOW.

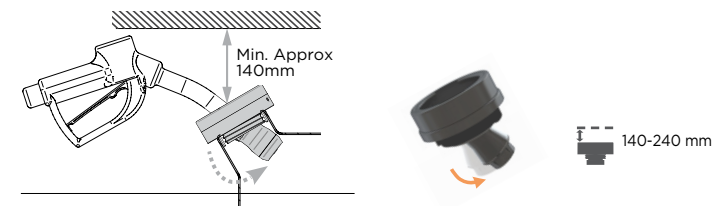


This solution is suited for tank necks which are sheltered by very low decks or within limited, confined spaces. It is a versatile solution featuring a swinging body which allows refueling pistol insertion at angles which may avoid collision between the pistol and surrounding structures.

- Low deck compatibility
- Tank mounting in accordance with our patented technology: fast, reliable and without the need for modifications, sealants or glues.
- Accepts 80% of existing original OEM caps of the standard 105mm diameter 2 point bayonet type.
- DEFLECT VERSION - high performance technopolymer fuel cap ring Accepts 100% of existing original OEM caps of the standard 105mm diameter 2 point bayonet type.

RECOMMENDED APPLICATIONS

Fuel anti-theft device for tanks necks having 2-point internal bayonet fitting 105mm.
DAF: all models - **MAN:** all models - **VOLVO:** all models - **MERCEDES:** all models - **RENAULT:** Premium, Magnum, Midlum with metal tank neck - **IVECO:** Stralis, EuroStar, EuroTec, Trakker, EuroTrakker - **DOOSAN:** all models with metal tank neck - **LIEBHERR:** all models with metal tank neck

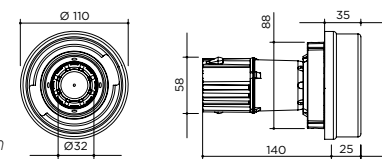


KOCKÒN CL2 KALIBER 105

58 04 21 001

TECHNICAL SPECIFICATIONS

- Steel/Zinc Magnesium alloy
- 1000g
- 120 l/min
- 110x110x165mm
- 131mm
- Ø 32mm
- 58mm
- 110mm



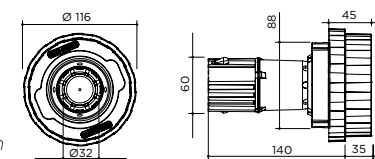
all dimensions are in mm

KOCKÒN CL2 KALIBER 105 DF

58 04 21 003

TECHNICAL SPECIFICATIONS

- HP Technopolymer Magnesium alloy
- 960g
- 120 l/min
- 116x116x175mm
- 131mm
- Ø 32mm
- 58mm
- 110mm



all dimensions are in mm

UNPARALLELED PROTECTION

No space for siphoning: only lets fuel into the tank, making it impossible to get fuel out by other means.

USES ORIGINAL CAP

The majority of original vehicle caps are compatible with the appropriate device from the KOCKÒN range. Few exceptions do exist, in which case compatible replacement caps are available in the Genesis spare parts range.

DUALITY TECH

Duality describes an assembly made of two parts made from Magnesium Alloy casting. The resulting assembly is ultimately effective in terms of strength, effectiveness and compliance to its precise scope as a finished anti siphon device.

DEFLECT VERSION

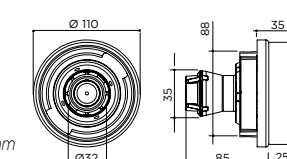
The DeFlect high performance technopolymer fuel cap ring represents a valid and sustainable alternative to steel and finds strength in its flexible nature.

KOCKÒN CL2 XL 105

58 04 31 001

TECHNICAL SPECIFICATIONS

- Steel/Zinc Magnesium alloy
- 765g
- 120 l/min
- 110x110x110mm
- 73,8mm
- Ø 32mm
- 47mm
- 110mm



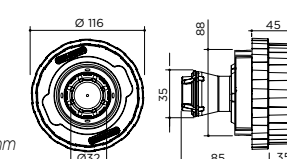
all dimensions are in mm

KOCKÒN CL2 XL 105 DF

58 04 31 003

TECHNICAL SPECIFICATIONS

- HP Technopolymer Magnesium alloy
- 725g
- 120 l/min
- 116x116x120mm
- 73,8mm
- Ø 32mm
- 47mm
- 110mm



all dimensions are in mm

TRULY UNIVERSAL SOLUTION

Specially suited to all those situations where there are external conditions that impact on possible fuel pistol positioning.

ULTRA LOW PROFILE

Specially designed mechanical configuration to suit situations where the height above the tank may be limited.

DUALITY TECH

Duality describes an assembly made of two parts made from Magnesium Alloy casting. The resulting assembly is ultimately effective in terms of strength, effectiveness and compliance to its precise scope as a finished anti siphon device.

DEFLECT VERSION

The DeFlect high performance technopolymer fuel cap ring represents a valid and sustainable alternative to steel and finds strength in its flexible nature.

FUEL ANTI-THEFT DEVICE



KOCKÒN CL2 APEX 80

FUEL ANTI-THEFT DEVICE

APEX REPRESENTS THE TOP OF THE FOOD CHAIN IN WHAT CONCERNS ANTI SIPHON DEVICES.



It is the exemplary representation of our DUALITY technology combined with all of the proven features of previous generations KOCKÒN products.

- It comes with a built in float device which impedes siphoning down to the very upper reach of the tank, which is always the hardest to protect.
- Tank mounting in accordance with our patented technology: fast, reliable and without the need for modifications, sealants or glues.
- Accepts original OEM caps tanks with 80mm internally threaded tank necks.
- DEFLECT VERSION - high performance technopolymer fuel cap ring Accepts 100% of existing original OEM caps of the standard 80mm internal threaded tank necks.

RECOMMENDED APPLICATIONS

For tank necks with inner threaded tank opening \varnothing 80 mm.

SCANIA: all models - **JOHN DEERE:** 5000-6000 - **MASSEY FERGUSON:** 4292 hd
- **IVECO:** Eurocargo having metal tank neck

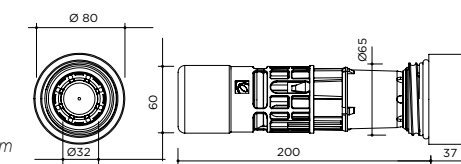


KOCKÒN CL2 APEX 80

58 17 16 001

TECHNICAL SPECIFICATIONS

- Steel/Zinc Magnesium alloy
- 900g
- 120 l/min
- 80x80x237mm
- 224mm
- \varnothing 32mm
- 60mm
- 80mm



all dimensions are in mm

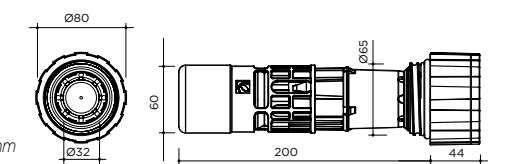


KOCKÒN CL2 APEX 80 DF

58 17 16 003

TECHNICAL SPECIFICATIONS

- HP Technopolymer Magnesium alloy
- 860g
- 120 l/min
- 80x80x244mm
- 224mm
- \varnothing 32mm
- 60mm
- 80mm



all dimensions are in mm

UNPARALLELED PROTECTION

No space for siphoning: only lets fuel into the tank, making it impossible to get fuel out by other means.

PROGRESSIVE FLOAT LOCK

The progressive float lock prevents any access to the fuel located in the upper part of the tank without interfering with refueling operations.

DUALITY TECH

Duality describes an assembly made of two parts made from Magnesium Alloy casting. The resulting assembly is ultimately effective in terms of strength, effectiveness and compliance to its precise scope as a finished anti siphon device.

DEFLECT VERSION

The DeFlect high performance technopolymer fuel cap ring represents a valid and sustainable alternative to steel and finds strength in its flexible nature.

KOCKÒN CL2 KALIBER 80

FUEL ANTI-THEFT DEVICE

KALIBER IS THE BEST SOLUTION WHEN THERE IS A LONG TANK NECK AND NO NEED OR SPACE FOR A FLOAT LOCK.



Full DUALITY technology, only without the float device.

- Tank mounting in accordance with our patented technology: fast, reliable and without the need for modifications, sealants or glues.
- Accepts original OEM caps of the standard 80mm diameter threaded type. For tanks with 80mm internally threaded tank necks.
- DEFLECT VERSION - high performance technopolymer fuel cap ring Accepts 100% of existing original OEM caps of the standard 80mm internal threaded tank necks.

RECOMMENDED APPLICATIONS

For tank necks with inner threaded tank opening Ø 80 mm.

SCANIA: all models - **JOHN DEERE:** 5000-6000 - **MASSEY FERGUSON:** 4292 hd
- **IVECO:** Eurocargo having metal tank neck

KOCKÒN CL2 XL 80

FUEL ANTI-THEFT DEVICE

XL STANDS FOR EXTRA LOW.



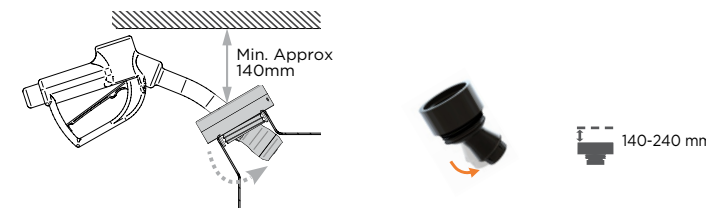
This solution is suited for tank necks which are sheltered by very low decks or within limited, confined spaces. It is a versatile solution featuring a swinging body which allows refueling pistol insertion at angles which may avoid collision between the pistol and surrounding structures.

- Low deck compatibility
- Tank mounting in accordance with our patented technology: fast, reliable and without the need for modifications, sealants or glues.
- Accepts original OEM caps of the standard 80mm diameter threaded type. For tanks with 80mm internally threaded tank necks.
- DEFLECT VERSION - high performance technopolymer fuel cap ring Accepts 100% of existing original OEM caps of the standard 80mm internal threaded tank necks.

RECOMMENDED APPLICATIONS

For tank necks with inner threaded tank opening Ø 80 mm.

SCANIA: all models - **JOHN DEERE:** 5000-6000 - **MASSEY FERGUSON:** 4292 hd
- **IVECO:** Eurocargo having metal tank neck

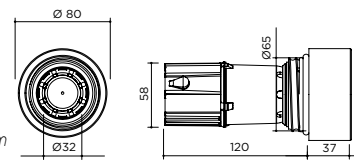


KOCKÒN CL2 KALIBER 80

58 17 26 001

TECHNICAL SPECIFICATIONS

- Steel/Zinc Magnesium alloy
- 730g
- 120 l/min
- 80x80x157mm
- 127mm
- Ø 32mm
- 58mm
- 80mm



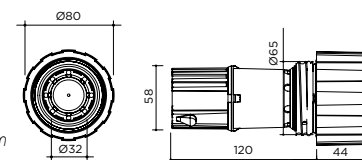
all dimensions are in mm

KOCKÒN CL2 KALIBER 80 DF

58 17 26 003

TECHNICAL SPECIFICATIONS

- HP Technopolymer Magnesium alloy
- 690g
- 120 l/min
- 80x80x164mm
- 127mm
- Ø 32mm
- 58mm
- 80mm



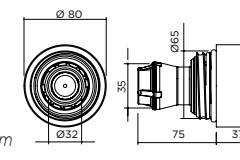
all dimensions are in mm

KOCKÒN CL2 XL 80

58 17 36 001

TECHNICAL SPECIFICATIONS

- Steel/Zinc Magnesium alloy
- 420g
- 120 l/min
- 80x80x112mm
- 71,2mm
- Ø 32mm
- 47mm
- 80mm



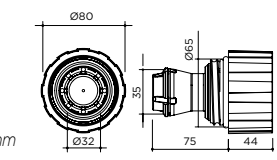
all dimensions are in mm

KOCKÒN CL2 XL 80 DF

58 17 36 003

TECHNICAL SPECIFICATIONS

- HP Technopolymer Magnesium alloy
- 380g
- 120 l/min
- 80x80x119mm
- 71,2mm
- Ø 32mm
- 47mm
- 80mm



all dimensions are in mm

UNPARALLELED PROTECTION

No space for siphoning: only lets fuel into the tank, making it impossible to get fuel out by other means.

USES ORIGINAL CAP

The majority of original vehicle caps are compatible with the appropriate device from the KOCKÒN range. Few exceptions do exist, in which case compatible replacement caps are available in the Genesis spare parts range.

TRULY UNIVERSAL SOLUTION

Specially suited to all those situations where there are external conditions that impact on possible fuel pistol positioning.

ULTRA LOW PROFILE

Specially designed mechanical configuration to suit situations where the height above the tank may be limited.

DUALITY TECH

Duality describes an assembly made of two parts made from Magnesium Alloy casting. The resulting assembly is ultimately effective in terms of strength, effectiveness and compliance to its precise scope as a finished anti siphon device.

DEFLECT VERSION

The DeFlect high performance technopolymer fuel cap ring represents a valid and sustainable alternative to steel and finds strength in its flexible nature.

DUALITY TECH

Duality describes an assembly made of two parts made from Magnesium Alloy casting. The resulting assembly is ultimately effective in terms of strength, effectiveness and compliance to its precise scope as a finished anti siphon device.

DEFLECT VERSION

The DeFlect high performance technopolymer fuel cap ring represents a valid and sustainable alternative to steel and finds strength in its flexible nature.

Concept: Grevi
Printed in Italy: Tipografia Sartore

November 2021

LagoGENESIS reserves
the right to make any
change or improvement
to their products and to
this document at any time
and without any prior
notification.

LagoGENESIS s.r.l. - via Selenia, 1
36061 Bassano del Grappa (VI) Italy
ph & fax + 39 0424 527851

www.lagogenesis.it

GENESIS is a brand of LagoGENESIS s.r.l.

