

Safe Assist TRAILER RAMP SYSTEM



Safe Assist is a new and revolutionary, lightweight, heavy-duty ramp door assist. Eliminating the physical strain of opening and closing heavy ramp doors by rendering the door virtually weightless. All that's required is the strength of a single finger throughout the complete motion.

Unlike traditional ramp assists, the new Safe Assist has been designed to be fully concealed to remove the need for dangerous cables that can snap or create a tripping hazard.

Supply Without Compromise

Transport Hardware

Safe Assist

TRAILER RAMP SYSTEM

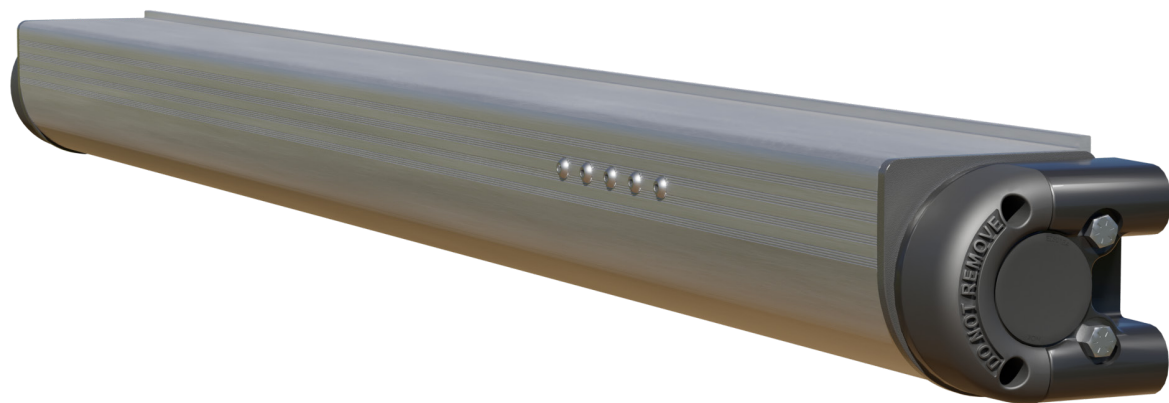
The lightweight aluminium design is non-corrosive, and maintains balanced weight distribution through the full range of motion, meaning the door won't slam when it reaches the fully open or closed position.

Typically used on trailers, torsion springs make the opening and closing of ramp doors difficult due to the initial force needed. With Safe Assist, the only required strength is of a single finger throughout the complete motion due to uniformed weight distribution.

The patent pending system mitigates danger and damage to cargo or animals within the trailer, and reduces vehicle downtime by removing the need for ramp door repairs.

Safe Assist also has a fully enclosed and concealed design to prevent corrosion over time, contributing to greater longevity and improved aesthetics.

- 100% concealed
- Adjustable
- Lightweight
- Eliminates dangerous cables
- Avoids non-linear weight distribution
- Non-corrosive, heavy duty aluminium
- Eliminates physical strain and danger of heavy ramp doors



Pre-Install Checklist

Preparation

- 1. Completed trailer design review with Albert Jagger for Safe Assist mounting. Must have a completed Safe Assist Model Number Calculator form.
- 2. A completed trailer ready for Safe Assist door install
- 3. Door ready to weld on Safe Assist
- 4. Safe Assist has arrived

Tools / Hardware Needed

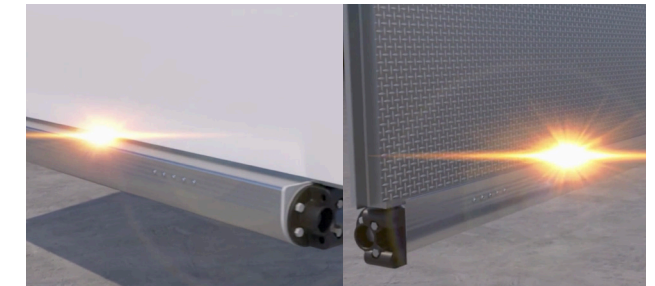
1. 1-1/8" Socket and ratchet
2. 5/8" Socket or impact driver
3. 5/8" Wrench
4. T27 Security torx bit and driver
5. 7/16" Drill bit (recommended long enough to drill through safe assist, 2.5", and mounting structure to aid in alignment)
6. Floor jacks or door lift to align the door
7. Door shims
8. Hardware kit: SA-MK-5, SA-MK-6, SA-MK-7, SA-MK-8 or:
 - a. 4x 7/16"-14 Grade 8 Hex Bolts (add 2.5" to depth of mounting structure)
 - b. 4x 7/16" ID Washers
 - c. 4x 7/16"-14 Locknut

INSTALLATION INSTRUCTIONS



1. Before Installation

The structure MUST be rigid. The frame where mounting MUST support a torque of 225-900 Ft/lbs depending on model. The welds MUST be able to withstand the torque.



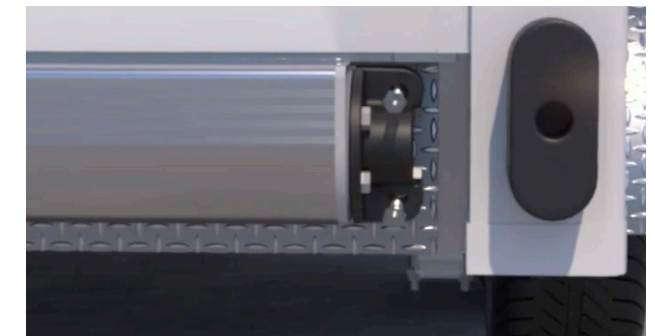
2. Door Attachment

The door must be securely welded to the housing tube. These welds MUST be able to withstand the torque created by the door.



3. Installation

Drill holes for the mounting supports (7/16"). Horizontal mounting holes centre to centre distance is specified to your unit's part number. Take care to ensure centreline accuracy.



4. Mounting to the Trailer

Use Safe Assist mounting kit specified or Grade 8 bolts and tighten to the required torque. Failure to securely attach the Spring-Adjust Mount (right hand mount) could allow ramp door spring to violently pull away from the trailer.



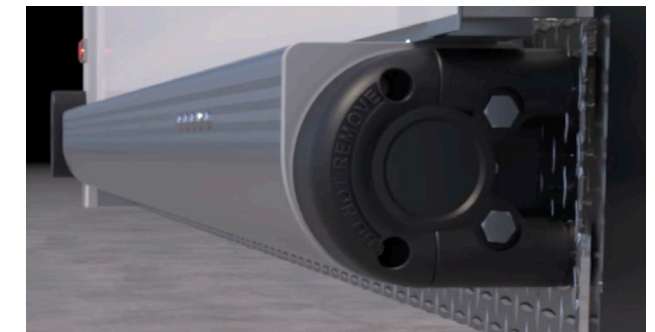
5. Adjust Preload Bolt

Once installed turn the preload bolt to adjust the spring preload. If adjustment is required, remove bolt cover, and set aside. Turn adjustment bolt clockwise to increase torque or counter-clockwise to decrease torque. Replace bolt cover after adjustments are made.

After adjustment, open and close the door several times to verify adjustment. Never stand directly behind or under the door. Especially during installation and testing.

Do NOT adjust preload with door lowered. Doing so will damage the mechanism.

Do NOT exceed the maximum or minimum preload of the adjustment bolt. Preload stops have been designed into the assembly. Adjusting preload beyond these points may permanently damage the internal structure, cause premature failure or injury.



6. Adjust Preload Bolt

NEVER stand directly under or directly behind the door. Stand safely to the side while operating.

Once spring preload is as desired reinstall the adjustable bolt cap.

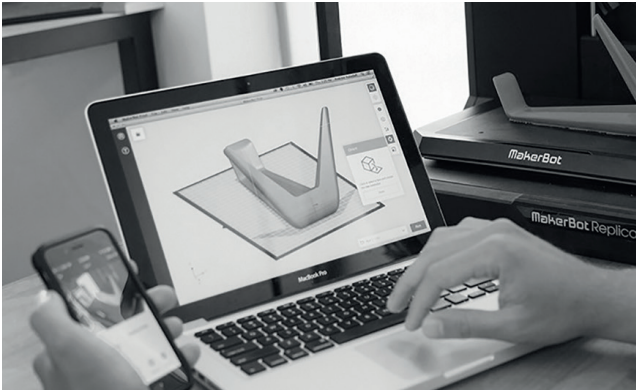
Install both security covers with the provided tamper resistant T27 torx screws.

Security cover should never be removed unless assembly needs servicing.

Product should only be serviced by qualified technicians. Disassembly by unqualified individuals could result in injury and property damage.

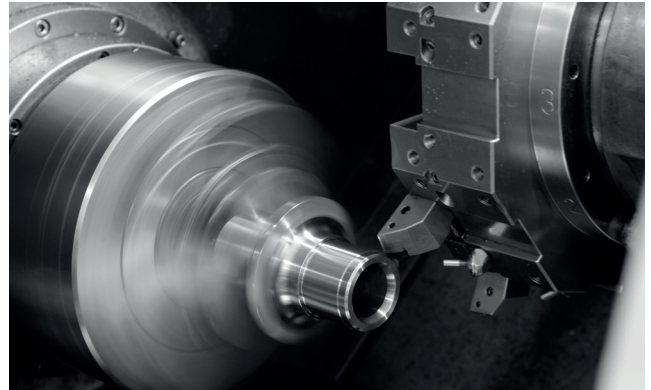
Never attempt to remove the Safe Assist door in the lowered position.

Supply Without Compromise



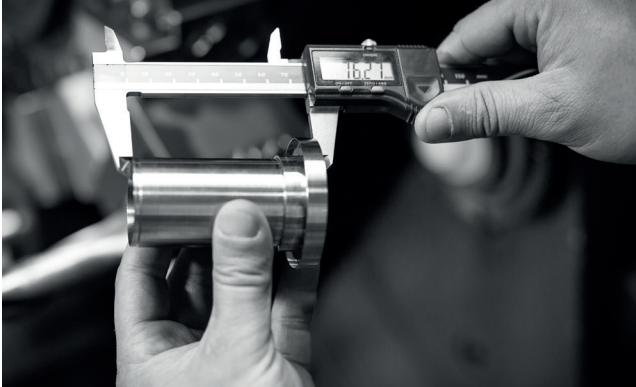
Design & Rapid Prototyping

To strive to be the best is just part of our ethos at Albert Jagger, we use the latest technologies to aid our designers so that we can develop the next generation of hardware and components. We use rapid prototyping so that we can see our developing designs and improve on them.



Manufacturing

As part of the process to ensure that we supply our customers with flexibility, versatility and diversity we have our own in-house manufacturing department. As the market leaders in our industry, we don't just supply parts, we design and manufacture them too.



ISO 9001 Quality

We at Albert Jagger Limited recognise the need to focus on customer satisfaction and that means not only meeting their expectations but exceeding them. One of our key objectives is to continually strive to improve quality of both product and service. To achieve this we maintain quality management system compliant with ISO 9001: 2015.



Customer Service

Our future depends on the success of our customers that is why we like to take a long term view to building relationships whilst delivering an unrivalled service and inspiring trust and confidence. With 130 years of history, we wouldn't be in the position we are if we hadn't looked after and listened to our customers.

Head Office

Centaur Works, Green Lane,
Walsall, West Midlands,
WS2 8HG. United Kingdom.

Contact

e sales@albertjagger.co.uk
t +44 (0) 1922 471 000

www.albertjagger.co.uk