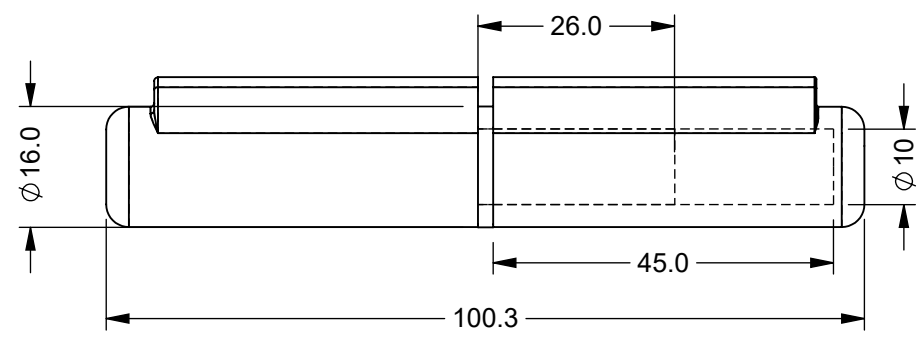
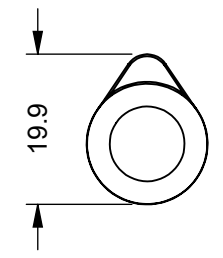
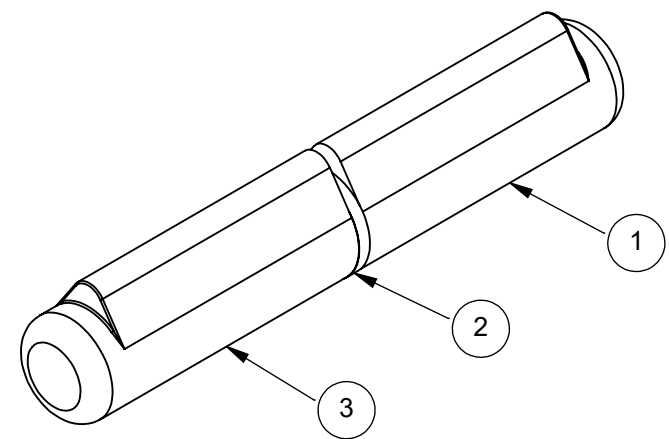
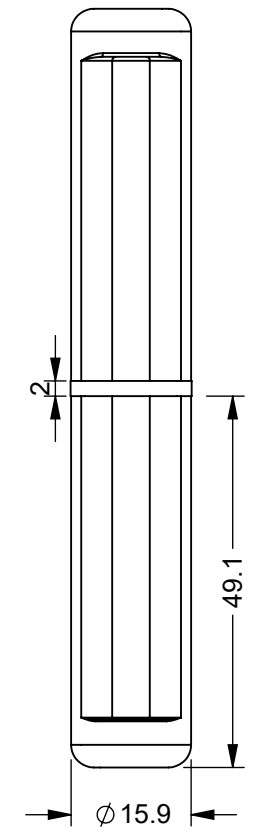


IF IN DOUBT ASK

ITEM NO.	PART NUMBER	DESCRIPTION	QTY.
1	2217-005.iam	CARBON STEEL HINGE BASE	1
2	2217-005-2	BRASS BEARING WASHER	1
3	2217-005-3	CARBON STEEL MOUNTING BLOCK	1



ZONE	REV.	DESCRIPTION	DATE	APPROVED
	2	RE-DRAWN IN SOLIDWORKS & ADDED PIN DIMS	31/07/2023	S.R

UNLESS OTHERWISE STATED, ALL DIMENSIONS IN mm

TOLERANCES	SURFACE FINISH	FILLET RADII
0.5 - 6 = ±0.1mm	1.6µm Ra	0.5 TO 1.0
6 - 30 = ±0.2 mm		
30 - 120 = ±0.3 mm	SQUARENESS 0.05 IN 25	
120 - 400 = ±0.5 mm	PARALLELISM 0.05 IN 25	
400 - 1000 = ±0.8 mm	RUNOUT 0.1	
1000 - 2000 = ±1.2 mm	ANGLES ±0.5°	
2000 - 4000 = ±2.0 mm		

MATERIAL: SEE TABLE	DRAWN BY: SR	DESCRIPTION: WELD ON LIFT - OFF HINGE - 100.3 O/A			A3
MASS: 0.161KG	CHECKED BY: AP	NUMBER: 2217-005	REVISION: 2	SHEET: 1 of 1	
FINISH: NATURAL	APPROVED BY: AP	ORIGINATION DATE: 31/07/2023	SCALE : PROPORTIONAL - DO NOT SCALE REF SCALE 1:1 WHEN PRINTED ON A3		

PROPRIETARY RIGHTS ARE INCLUDED IN THE INFORMATION DISCLOSED HEREIN. NEITHER THIS DOCUMENT NOR ANY INFORMATION DISCLOSED SHALL BE REPRODUCED, USED, TRANSFERRED TO OTHER DOCUMENTS, OR DISCLOSED TO OTHERS FOR ANY PURPOSE INCLUDING MANUFACTURING UNLESS SPECIFICALLY AUTHORISED IN WRITING
REMOVE ALL SHARP EDGES AND BURRS
PART FINISHING AND MARKING TO CESF001

