
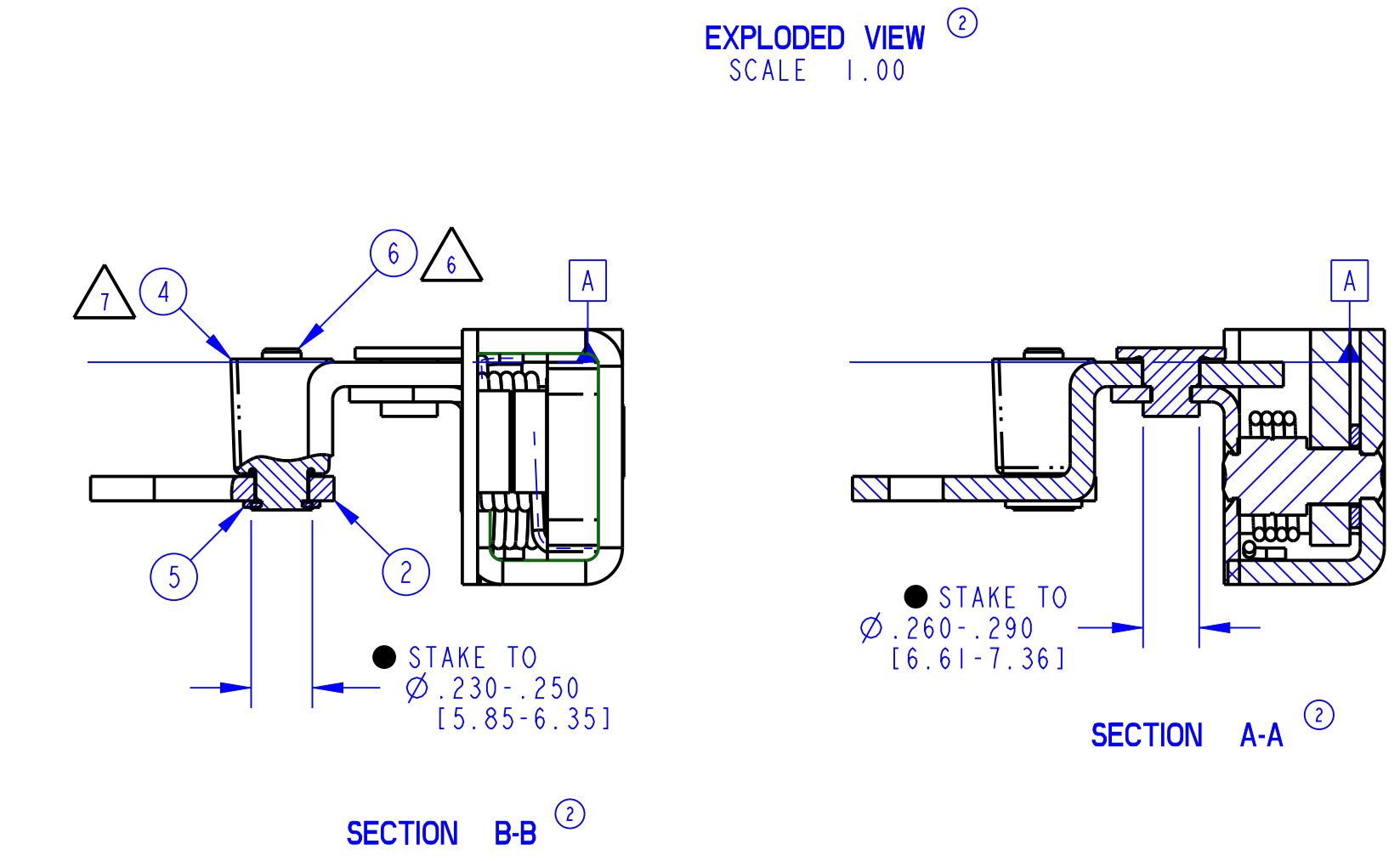
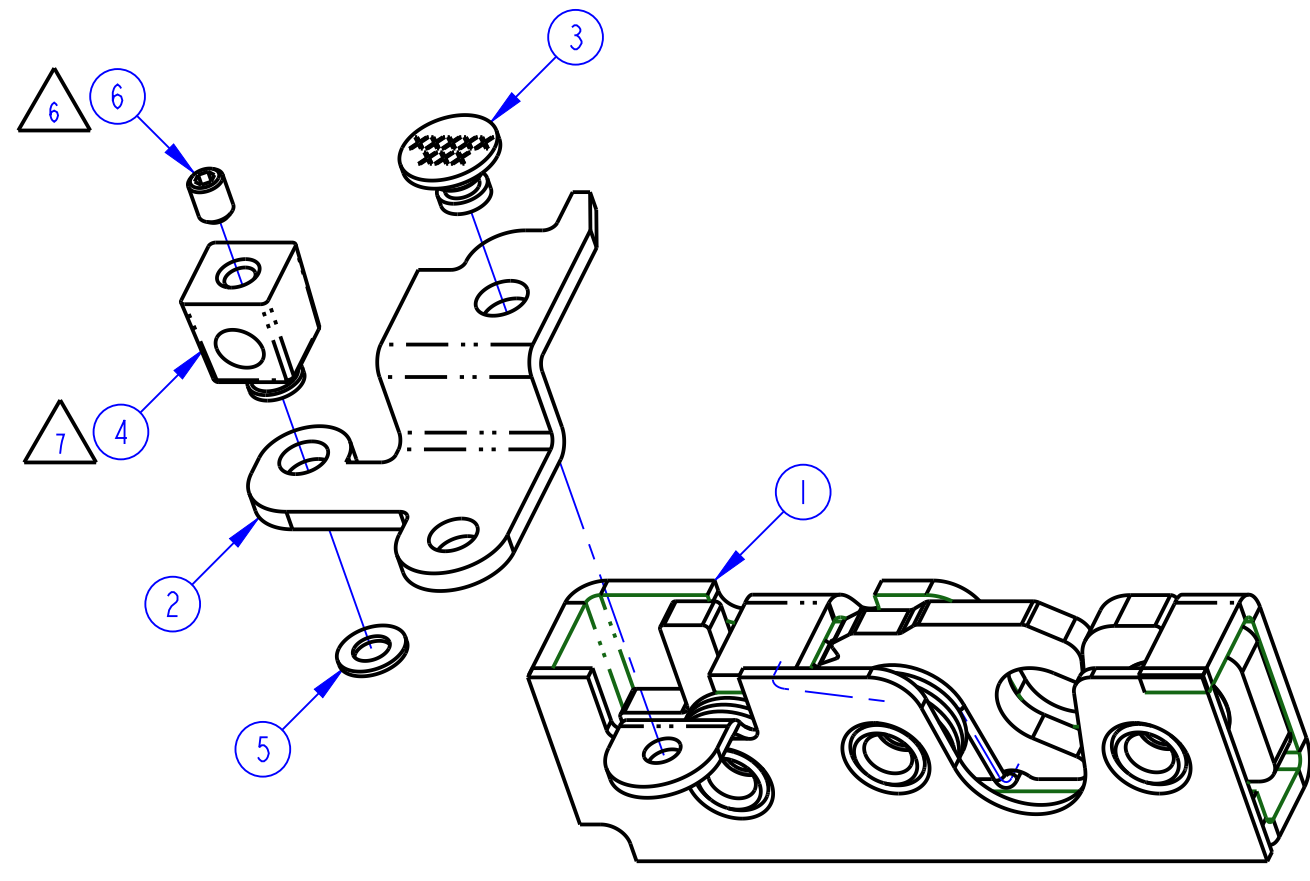
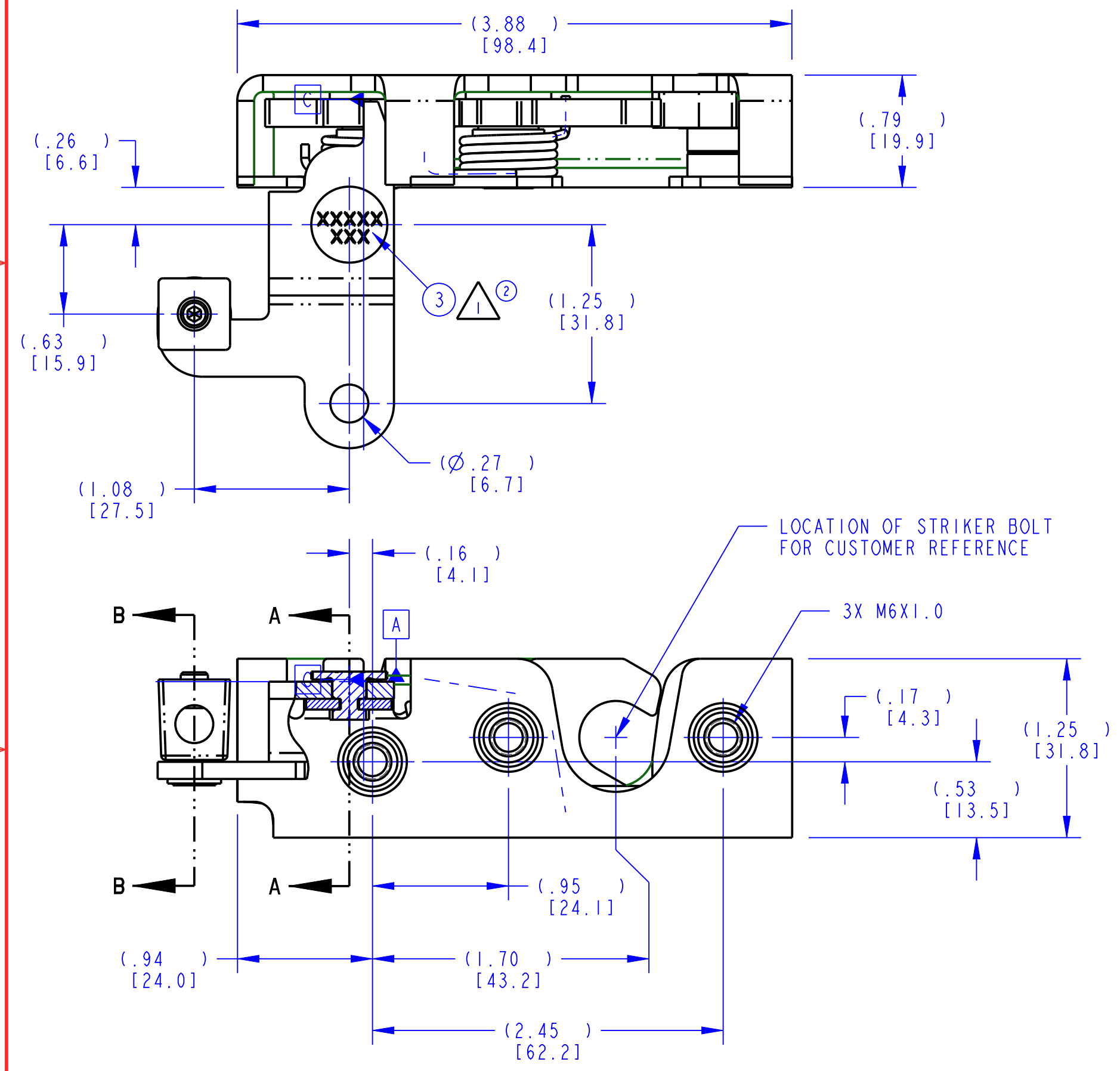


PART NUMBER	ITEM 1 BASE LATCH (QTY)	ITEM 2 LEVER (QTY)	ITEM 3 RIVET (QTY)	ITEM 4 COLLAR (QTY)	ITEM 5 WASHER (QTY)	ITEM 6 SETSCREW (QTY)	PART MARKING
24623-01	0500200-34 (1)	12584-01 (1)	80635-16 (1)	12504-09 (1)	13152-01 (1)	81574-00 (1)	

REVISION	ECN	ECN BY	DESCRIPTION
A	PRE-RLSE	IC 28/09/07	CREATED
B	PRE-RLSE	JRS 10/18/07	ADDED NOTES; CUSTOMER DIMENSIONS;
1	RLSE	AEP 10/30/07	DELETED NOTE 3, ADDED NOTE 7, RELEASED FOR PRODUCTION
2	39161	RLO 11-24-15	BOM (ITEM 1); 0500200-34 WAS 0500200-18. UPDATED DRAWING FORMAT, PART MARK, DESCRIPTION, NOTE 3, VIEWS, PART WEIGHT (LB WAS KG). ADDED PART MARKING COLUMN, NOTES 8 & 9, VIEWS. REMOVED -XX FROM PART NUMBER.



- NOTES: UNLESS OTHERWISE SPECIFIED;
- ① IDENTIFY ASSEMBLY WITH PART NUMBER AND DATE CODE APPROXIMATELY AS SHOWN, OR IN OTHER APPROVED LOCATIONS AS OUTLINED IN ES-121. ORIENTATION OF THE RIVET CONTAINING PART NUMBER AND DATE CODE NOT IMPORTANT.
  - 2. ASSEMBLY COMPLIES WITH STRENGTH REQUIREMENTS OF SAE J839.
  - ③ 3. TIGHTEN CLASS 8.8 OR BETTER MOUNTING FASTENERS TO THE FASTENER MANUFACTURER'S RECOMMENDED TORQUE VALUE; HOWEVER, DO NOT EXCEED 120 IN-LB [13.6Nm] TO COMPLY WITH FMVSS206 AND EC-11 STRENGTH REQUIREMENTS. THE THREADED END OF THE FASTENER MUST PASS COMPLETELY THROUGH THE AXLE AND BEYOND THE OUTSIDE SURFACE OF THE LATCH.
  - 4. WHEN MOUNTING LATCH; MOUNTING HOLE SIZE NOT TO EXCEED  $\phi .312$  [7.92]
  - 5. DIMENSIONS IN [ ] ARE MILLIMETERS FOR REFERENCE ONLY.
  - ⑥ ⑦ SETSCREW (ITEM 6) TO BE SHIPPED INSTALLED INTO COLLAR (ITEM 4) BY THREE TO FOUR THREADS.
  - ⑦ AFTER STAKING; COLLAR (ITEM 4) MUST SPIN FREELY.
  - ⑧ 8. USE WITH TRIMARK'S  $\phi 0.500$  [12.70MM] STRIKER BOLT.
  - ⑨ 9. OPPOSITE HAND ASSEMBLY IS 24624-01.

<p>② INDICATES REQUIRED ASSEMBLY INFORMATION. UOS: THE -00 VERSION SHALL BE THE UNFINISHED VERSION OF PART SHOWN. UOS: ALL DIMENSIONS APPLY BEFORE COATING. (ASME Y14.5M, sec. 2.4.1)</p>		<p><b>TriMark</b> 500 Bailey Avenue P. O. Box 350 New Hampton, Iowa 50659 U.S.A. Tel: 641-394-3188 Fax: 641-394-2392</p>																																													
<p>TOLERANCES UNLESS OTHERWISE SPECIFIED (UOS) ASME Y14.5M-1994</p> <table border="0"> <tr> <td>INCH</td> <td>MILLIMETER</td> </tr> <tr> <td>X.X = ±.1</td> <td>X = ±3</td> </tr> <tr> <td>X.XX = ±.03</td> <td>X.X = ±.8</td> </tr> <tr> <td>X.XXX = ±.010</td> <td>X.XX = ±.25</td> </tr> </table> <p>ANGLES X° = ±3° X.X° = ±1.0° X.XX° = ±.50°</p>		INCH	MILLIMETER	X.X = ±.1	X = ±3	X.XX = ±.03	X.X = ±.8	X.XXX = ±.010	X.XX = ±.25	<table border="1"> <tr> <td>DRAWN BY</td> <td>IC</td> <td>09/28/07</td> </tr> <tr> <td>CHECKED BY</td> <td>GCL</td> <td>10/18/07</td> </tr> <tr> <td>PROJECT</td> <td colspan="2">PRODUCT CODE</td> </tr> <tr> <td>XZK101</td> <td colspan="2">E16 (050-0200)</td> </tr> <tr> <td colspan="3">CUSTOMER</td> </tr> <tr> <td colspan="3">CUSTOMER PART NUMBER</td> </tr> <tr> <td colspan="3">DESCRIPTION</td> </tr> <tr> <td colspan="3">050-0200, LH, M6X1.0, 2PT, L</td> </tr> <tr> <td>PART WEIGHT</td> <td>② SURFACE AREA</td> <td>② SIZE</td> </tr> <tr> <td>(0.67 LB)</td> <td></td> <td>C</td> </tr> <tr> <td>SCALE</td> <td>② PART NUMBER</td> <td>②</td> </tr> <tr> <td>1.25</td> <td>24623</td> <td></td> </tr> </table>		DRAWN BY	IC	09/28/07	CHECKED BY	GCL	10/18/07	PROJECT	PRODUCT CODE		XZK101	E16 (050-0200)		CUSTOMER			CUSTOMER PART NUMBER			DESCRIPTION			050-0200, LH, M6X1.0, 2PT, L			PART WEIGHT	② SURFACE AREA	② SIZE	(0.67 LB)		C	SCALE	② PART NUMBER	②	1.25	24623	
INCH	MILLIMETER																																														
X.X = ±.1	X = ±3																																														
X.XX = ±.03	X.X = ±.8																																														
X.XXX = ±.010	X.XX = ±.25																																														
DRAWN BY	IC	09/28/07																																													
CHECKED BY	GCL	10/18/07																																													
PROJECT	PRODUCT CODE																																														
XZK101	E16 (050-0200)																																														
CUSTOMER																																															
CUSTOMER PART NUMBER																																															
DESCRIPTION																																															
050-0200, LH, M6X1.0, 2PT, L																																															
PART WEIGHT	② SURFACE AREA	② SIZE																																													
(0.67 LB)		C																																													
SCALE	② PART NUMBER	②																																													
1.25	24623																																														
<p>DO NOT SCALE DRAWING</p> <p>REF. T/M OP 4.20-2 FOR SUP. QUALITY REQ. REF. T/M OP 4.20-3 FOR INT. QUALITY REQ.</p>																																															