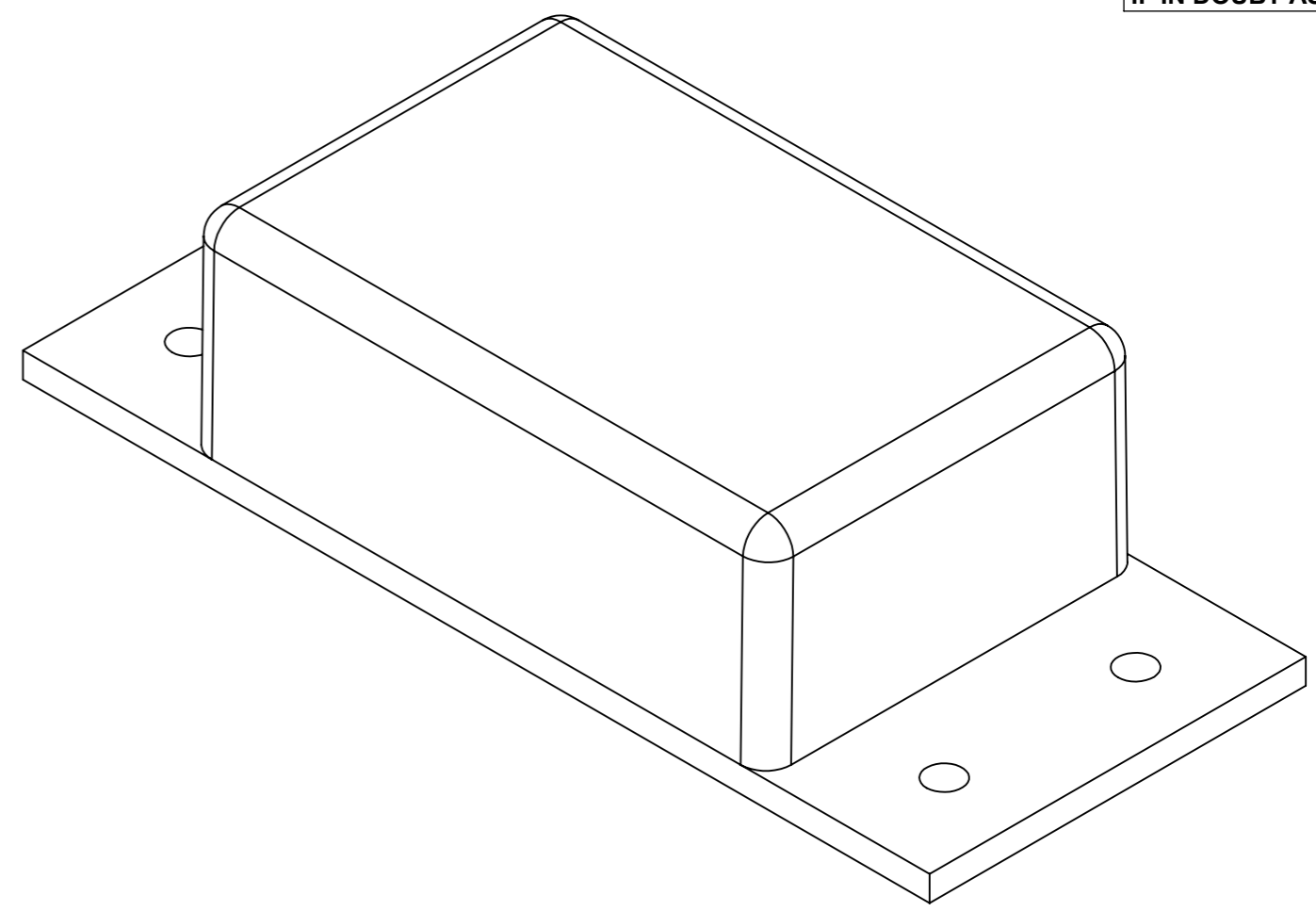
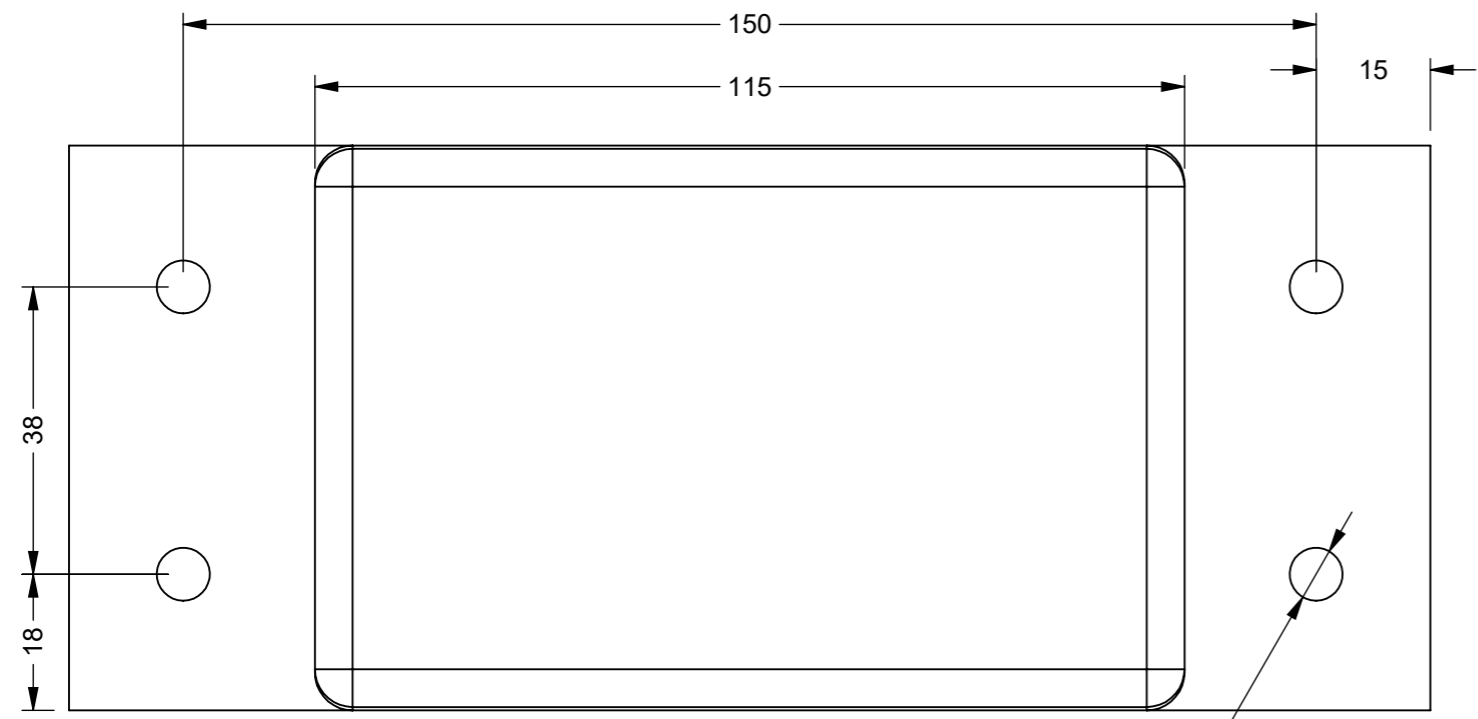
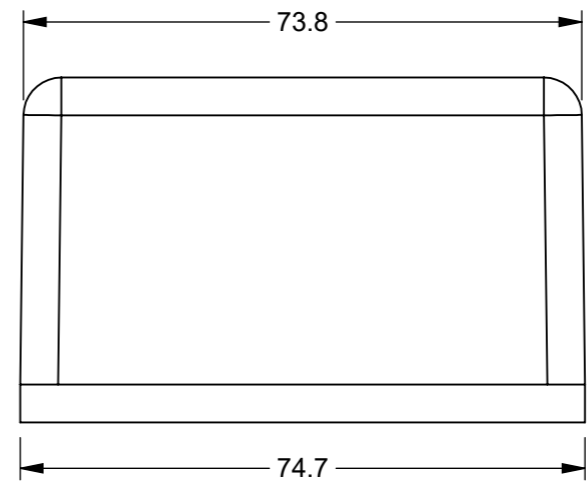
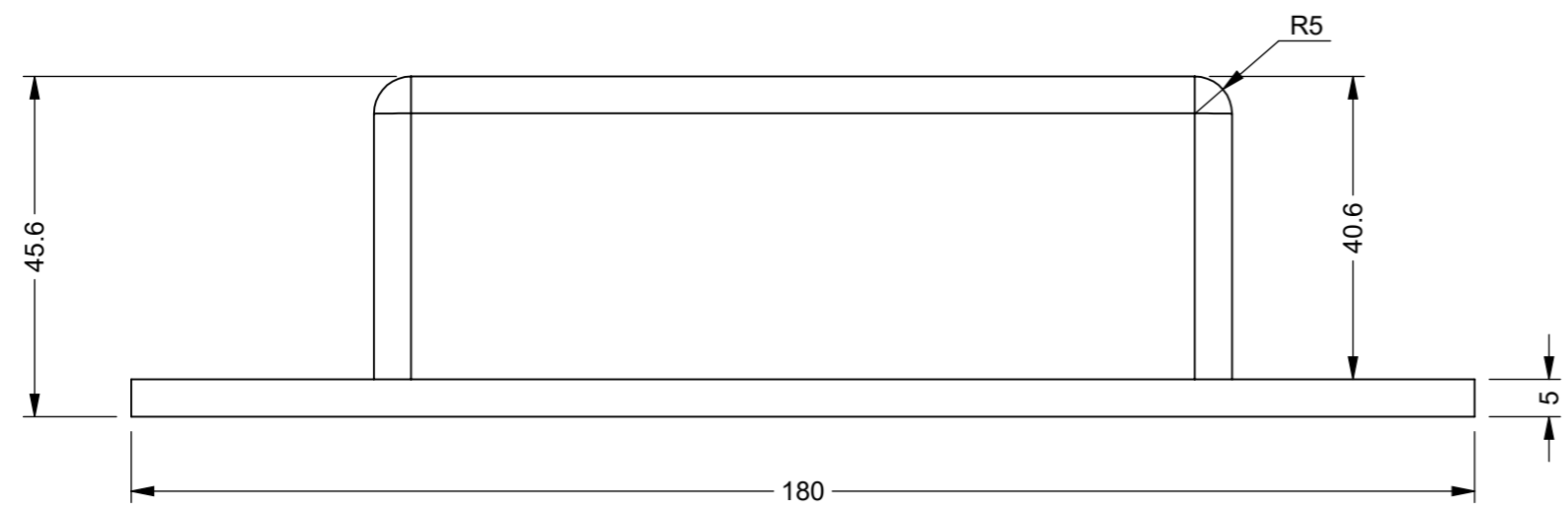


A
B
C
D
E
F

A
B
C
D
E
F



4X Ø7.0 HOLES



	1	VALIDATION COMPLETE	15/05/2024	AP
ZONE	REV.	DESCRIPTION	DATE	APPROVED

REVISIONS					A3
MATERIAL: ALUMINIUM & SYNTHETIC RUBBER		DRAWN BY: SR	DESCRIPTION: Rubber/Aluminium Tipper Plate - Bolt-On		
MASS: 0.41KG		CHECKED BY: AP	NUMBER: 9922-108	REVISION: 1	
FINISH: NATURAL & BLACK		APPROVED BY: AP	SHEET: 1 of 1		
UNLESS OTHERWISE STATED, ALL DIMENSIONS IN mm		ORIGINATION DATE: 14/05/2024	SCALE : PROPORTIONAL - DO NOT SCALE REF SCALE 1:2 WHEN PRINTED ON A3		PROJECTION 3rd ANGLE

TOLERANCES		SURFACE FINISH 1.6µm Ra	
0.5 - 6	= ±0.1mm	FILLET RADII	0.5 TO 1.0
6 - 30	= ±0.2 mm	SQUARENESS	0.05 IN 25
30 - 120	= ±0.3 mm	PARALLELISM	0.05 IN 25
120 - 400	= ±0.5 mm	RUNOUT	0.1
400 - 1000	= ±0.8 mm	ANGLES	±0.5°
1000 - 2000	= ±1.2 mm		
2000 - 4000	= ±2.0 mm		

PROPRIETARY RIGHTS ARE INCLUDED IN THE INFORMATION DISCLOSED HEREIN. NEITHER THIS DOCUMENT NOR ANY INFORMATION DISCLOSED SHALL BE REPRODUCED, USED, TRANSFERRED TO OTHER DOCUMENTS, OR DISCLOSED TO OTHERS FOR ANY PURPOSE INCLUDING MANUFACTURING UNLESS SPECIFICALLY AUTHORISED IN WRITING
REMOVE ALL SHARP EDGES AND BURRS
PART FINISHING AND MARKING TO CESF001

